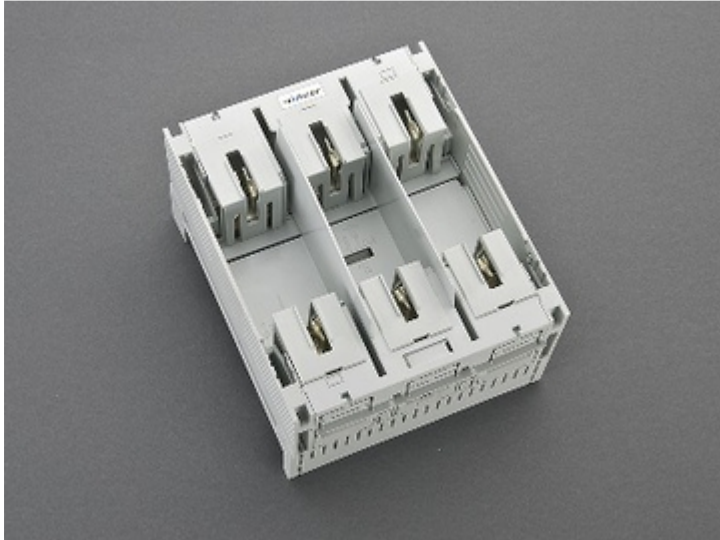


NH bus-mounting fuse base, 250 A (03 300)



Description

Article

Part No.: 03 300

QUADRON® 60Classic

NH bus-mounting fuse base, 250 A

box terminal, tapping downward / upward

size 1 / 3P

System

60Classic

Product group 10

Subgroup 54

pack size 1

EAN 4021267033002

Advantages of the product

CrossLink® adapter technology

Fast and safe conversion of the connection for top or bottom

Simple and safe clicking into place and making contact

Safe connection through shock protection split into two

Busbar supports for flat busbars can be mounted above each other

Catalog page 2015 : 2/25, 2/32

eCl@ss 6.1 27142106

eCl@ss 7.1 27142106

ETIM 4.0 EC000067

ETIM 5.0 EC000067

Approvals

Standards

IEC 60269-1:2006 + A1:2009 + A2:2014

IEC 60269-2:2013

Type number: QCC-NH1

Product data

Electrical data

Rated current (IEC): 250 A

Rated voltage (IEC) AC: 690 V

Rated voltage (IEC) DC: 440 V

Power dissipation:

The power dissipation at a typical load of 80% of the rated current results to 20.1 W.

(The power dissipation for operation with rated current would be 31.4 W.)

rated isolation voltage U_i (AC): 800 V

Rated surge voltage U_{imp} : 6 kV

max. permitted voltage (IEC) AC: 800 V

max. permitted voltage (IEC) DC: 800 V

breaking capacity with fuses: 80 kA

for fuse links IEC 60269-2 / DIN VDE 0636-2 size 1 up to 32W power dissipation

Adapter module, degree of protection IP20 at front

Mechanical data

W x H x D: 184 x 210 x 132

Weight: 210.5 kg/100

Poles: 3-pole

Terminal points

box terminal

Cu 70-185mm²f

Cu 35-150mm²s(r)

Cu 35-120mm²f+AE

la.Cu 15.5-24mm large

terminal space 24.5 x 12mm

min. terminal space height 3mm

(flexible cables of maximum cross-section may not fit when using wire-end ferrule)

Material properties

Main body: temperature stability 125°C,
self-extinguishing in acc. to UL 94,
creepage resistance CTI 200,
halogen-free

Contacts: spring-loaded copper contacts, silver plated

Shock protection cover: temperature stability 125°C,
self-extinguishing in acc. to UL 94,
creepage resistance CTI 200

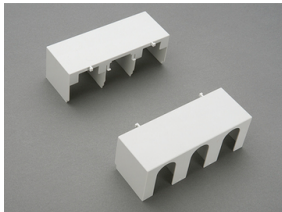
Version

Variant with M10 connection screws: 03 300

Accessories



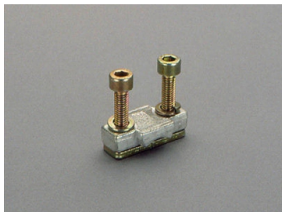
03 502
NH fuse extractor handle
open
size 000 - 3



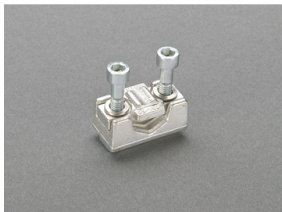
33 142
cover for cable lugs
for NH fuse switch disconnecter size 1



33 145
prism terminal, double
2x 35-70 mm²
size 1



33 163
clamp-type connection
70-150 mm²
size 1



33 166
prism terminal for fuse switch-disconnector
35-150mm², Cu and Al
size 1



33 916
grip lug cover
for NH fuse base
size 1